



02 9452-3566
sales@getpacked.com.au

2920 Protection Film

Blue PE Medium Tack

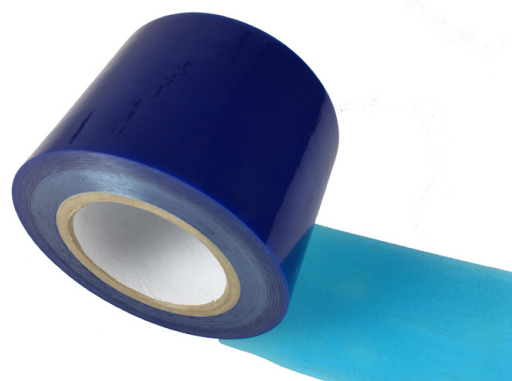
JUNE 2020
 Supersedes all previous versions

Conformable translucent blue film that removes cleanly & easily.



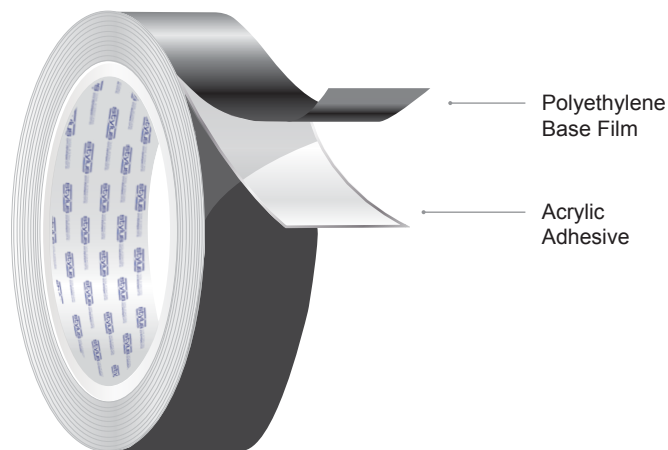
Applications

- Steel
- Aluminium surfaces
- Glass
- Windows
- PVC profiles



Benefits

- Resistant to moisture & many chemicals such as dilute acids, alkalis & solutions
- Can be curved around corners
- Excellent conformability & easy unwind
- RoHS compliant in relation to Directive 2011/65/EU with amendment (EU) 2015/863
- Clean removal after exposure outdoors for up to 6 months AS 2001.4.212006 test method



Technical Data

• Adhesive power	★★★★	• Colour	Translucent blue
• Thickness	50 um	• Outdoor rating	Up to 6 months
• Tensile strength - N/cm ²	≥1900	• Adhesive type	Acrylic
• Elongation - %	>200	• Adhesion to steel - N/10cm	12±2
• Temperature Resistance	15 to 35 °C	• Backing material	Polyethylene Base Film

The above information is given in good faith for guidance only and not specification purposes. All data is based upon average values, the Purchaser shall be responsible for determining the suitability of this product for their purposes.



02 9452-3566

sales@getpacked.com.au

Recommended Storage Conditions

Product must be kept in its original box and packaging in a dry atmosphere away from direct sunlight. The optimal storage conditions for this product is between 18°C - 22°C with a relative humidity of 40% - 50%.

Material Safety Data Sheet

MSDS can be downloaded from Stylus Tapes website www.stylustapes.com.au

Recommended Cleaning & Installation Procedures

STEP 1 - SURFACE EVALUATION:

There are numerous types of adhesive tapes, some suited to a variety of uses and others for more specialised individual applications. A thorough evaluation is recommended when bonding to any surface. Porous surfaces such as wood, concrete & brick should be smooth & sealed with an appropriate sealer prior to application. All adhesive tapes should only be applied to clean & dry surfaces. There are various methods of preparation depending on the surface and/or application. For technical advice we recommend you speak with our local sales office. Surfaces must be free of:

- Any Contaminants
- Moisture & Chemical Residue
- Dust, Fibres, Concrete Powders, Sand, Soil & Dirt Particles
- O.E.M. Cleaners, Grease, Wax, Detergent & Release agents on plastic profiles/extrusions etc
- Flaking Paint & Corrosion

STEP 2 - CLEANING INSTRUCTIONS:

The surface being applied to should be prepared with an appropriate cleaning solution, preferably IPA (Isopropanol) using a clean lint-free wiping cloth or disposable wipe (never re-cycled rags). Renew cleaning cloths regularly. (Applications involving paper, board, fabric etc do not require IPA cleaning) This should be performed immediately prior to application of adhesive tape. When using any cleaning solutions it is recommended to test a small area to ensure there is no reaction/discolouration with the surface. It is important to note that all painted/sealed surfaces should be completely dry/cured. (Refer to manufactures recommendations).

STEP 3 - INSTALLATION PROCESS:

Once the surface has been adequately prepared tape application can commence. Care should be taken to avoid finger contact with adhesive. The portion of tape held by your fingers should overlap the area being applied to & trimmed, as finger contact with any adhesive tape will significantly reduce its performance. Both single & double sided tapes require sufficient rub down pressure to ensure 100% surface contact. Where double sided tapes are being used pressure must be re-applied after both surfaces have been brought together. Surface temperature should be above 10°C at time of application. (Use some heat if necessary - Hair Dryer, Fan Heater etc.).

NB. Storage – Ensure all tapes are stored in clean/dry condition & returned to the protective bag between use.

SPECIAL NOTE: Adhesive Bond Strength will improve with time varying from a few hours to 2-3 days depending on the adhesive tape product used & climactic conditions.

Disclaimer

The information in this Product Data Sheet, including technical information, guidance, physical description of product, product characteristics, expected performance, safety and other information, are based on manufacturer tests, records, experience and review by Stylus Tapes technical staff, but not guaranteed as to reliability, accuracy or completeness. The values in the data tables in this Product Data Sheet are typical or average values and may vary. They are not specifications. Should you require further detail, please email Stylus Tapes Technical Department at sales@stylustapes.com.au.

The information in this Product Data Sheet is provided for the consideration of the distributor or user, as the case may be, and it is the responsibility of the distributor or user, as the case may be, to assess the product and the information and to independently determine whether the product is suitable for the intended application. Stylus Tapes cannot anticipate every intended use or potential application and many factors are beyond the control of Stylus Tapes and uniquely within the knowledge or control of the user or purchaser, as the case may be and related to the particular use and application by the distributor or user, as the case may be. Therefore, Stylus Tapes strongly recommends that products are first tested by the distributor or by the user, under individual application conditions, prior to commercial or specialist use.

The information does not constitute or imply a warranty of any kind, including, but not limited to, a warranty of saleability or of fitness for any particular purpose nor a representation for which Stylus Tapes assumes any legal responsibility. Except to the extent prohibited by law, Stylus Tapes will not be liable for any loss or damage arising from or related to the product.

Stylus Tapes will assess requests for return followed by replacement or refund of purchase price, at its sole discretion, of any product considered by the distributor or user, as the case may be, to be defective or faulty, provided that any defect or fault, if established, can be shown to be a manufacturing defect or fault and not caused by the distributor or user, as the case may be, including as a result of misuse, incorrect storage conditions, including exposure to sunlight or storage not in its original box, and including incorrect storage temperature or incorrect relative humidity level, or incorrect surface preparation. Stylus Tapes will only consider requests for return within 14 days of Stylus Tapes invoice date for any product considered faulty or defective by the distributor or user. Product cannot be returned until Stylus Tapes distributor has first submitted a request for return and obtained approval from Stylus Tapes after sales representative inspection. A return authorisation reference number together with written return instructions will then be provided. All special cut/non stock items cannot be returned. This Product Data Sheet is provided to all authorised distributors of Stylus Tapes and updated regularly by Stylus Tapes, and when information has changed, and it is the responsibility of any such distributor to provide the latest information herein, including the information in the Disclaimer, to any purchaser or user of the product, as the case may be.